





1007

# Steinbeck

- 7 suites
- mann,
- fitz
- hemingway
- 1 writer
- 3 artist
- pres



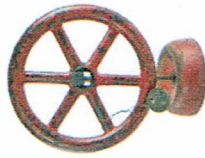
Charcoal permanent  
paint pen-heather  
heckle



Vintage tins representing  
early americana-relique



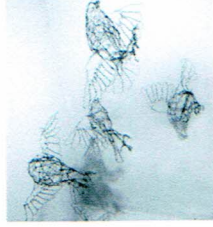
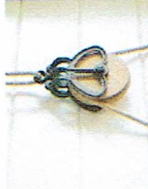
Railroad spike hardware-Etsy



Antique wheels on stands-relique

American author 27  
Books-Of east of eden,  
mice and men  
Grapes of wrath

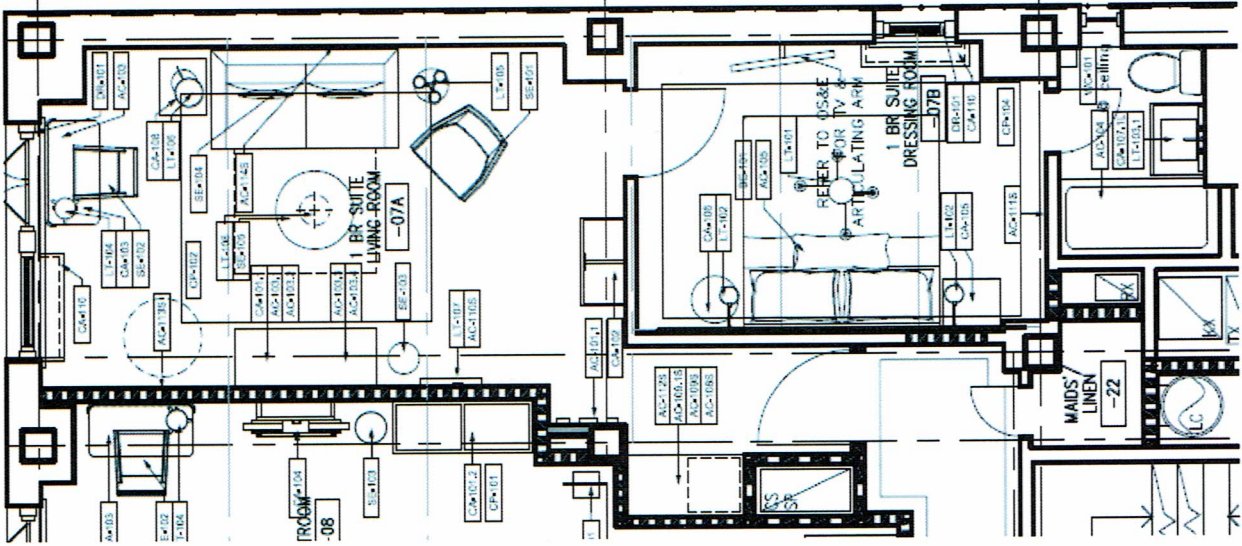
Pulleys- richard lieberman



Wire birds-susan graham  
Birds are mentioned in the  
Grapes of Wrath, also  
mentioned in his short story,  
'The Great Mountains', as the  
character Jody would try and  
shoot at birds when he was  
feeling malicious (but never  
hit anything)



Dynamic bronze tiles,  
European granite and  
marble

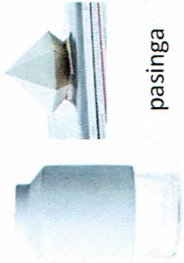


- Born in 1902, died 1968, books in 30s and 40s
- lived half his life in nyc
- worked on construction of Madison square garden
- 1963 novel prize in literature
- "Giant of American letters"
- works are considered classics of western literature
- left Stanford without a dress in 1925 and traveled to nyc and took odd jobs while tries to write
- two bedroom apartment 941 for 6 months then moved across the hudson river with gf gwyn
- would meet at the bar for drinks in the late 40s
- 3 wives
- Large contributor to the masculinist, modernist American novel
- Middle class background, but often wrote about working class.
- Often wrote about the hopes of the individual as part of the family, group and community- a collectivist perspective
- His novels create an American modernism that is in many ways a masculine-inflected version of sentimentalism
- The Industrial Americana in the suites is a nod to the quiet, working class masculinity that was so important to his stories and downtrodden, everyman protagonists.



1005

173 rooms



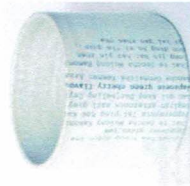
pasinga



Blue eagle pottery



Alice goldsmith ceramics



Fitzgerald writings from great gatsby ovo ceramics

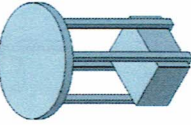


Spilled paint on concrete artist studio flooring by signature

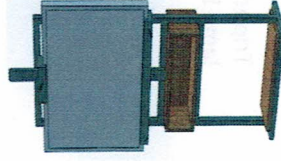


Dot and bo

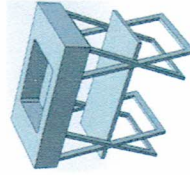
Drop cloth painted skyline gesture



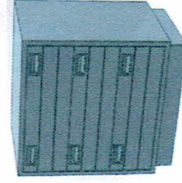
Painted stool by ben coven



Easel bryan ashley



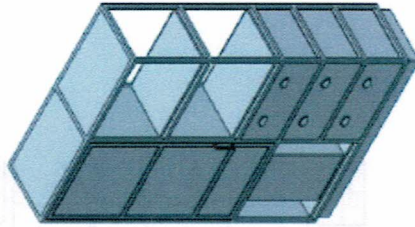
Artists table vanity by fairmont  
Contrasting outlines in bathroom.  
Artist tile.  
American standard



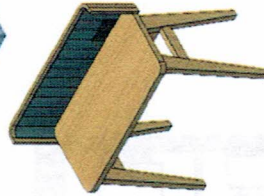
Flat files for drawings- bryan ashley



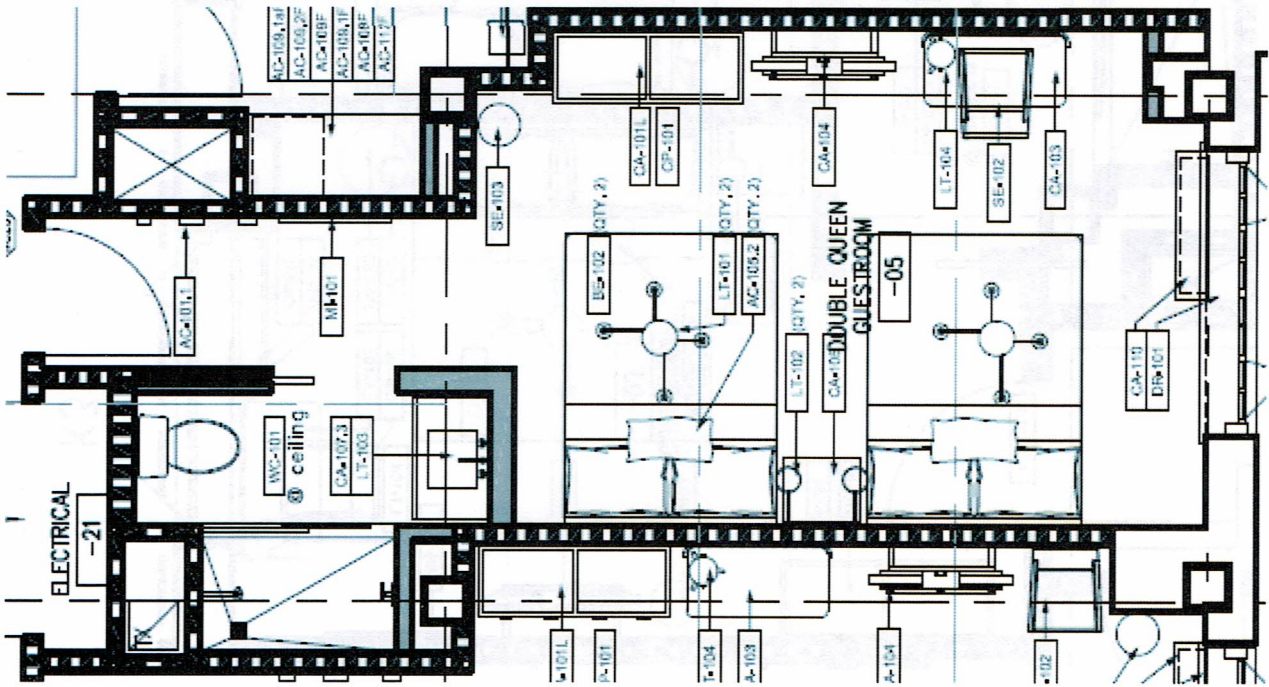
Fairmont desk chair with artists smock



Saw horse bench with tackable felt lacquer craft



Blank canvas





# THE RENWICK

HOTEL / NEW YORK

## THE RENWICK NEW YORK

**Location:** 118 East 40th Street, New York, NY 10016  
(Between Park and Lexington Avenues)

**Phone Number:** 212-687-4875

**Hotel Website:** [www.therenwickhotelnewyork.com](http://www.therenwickhotelnewyork.com)

**Hotel Amenities:**

- 173 guestrooms inspired by the soul and history of the building
- Including 24 Double Queens, 6 rooms with terraces, 33 suites including up to seven (7) 2-bedrooms
- All rooms feature in-room refrigerator
- Complimentary bottles of Saratoga water
- Custom Brooklyn-based Apotheke bath amenities
- Complimentary 200 mb/s WiFi and hardwire access
- 48" TVs stored in signature easel
- Large artist inspired writing desks
- High level of USB and 120V Plug-ins
- Custom made in NY- skyline blinds and Pollackesque stools
- Fitness Center
- Business Center
- Signature Restaurant & Bar: Bedford & Co.